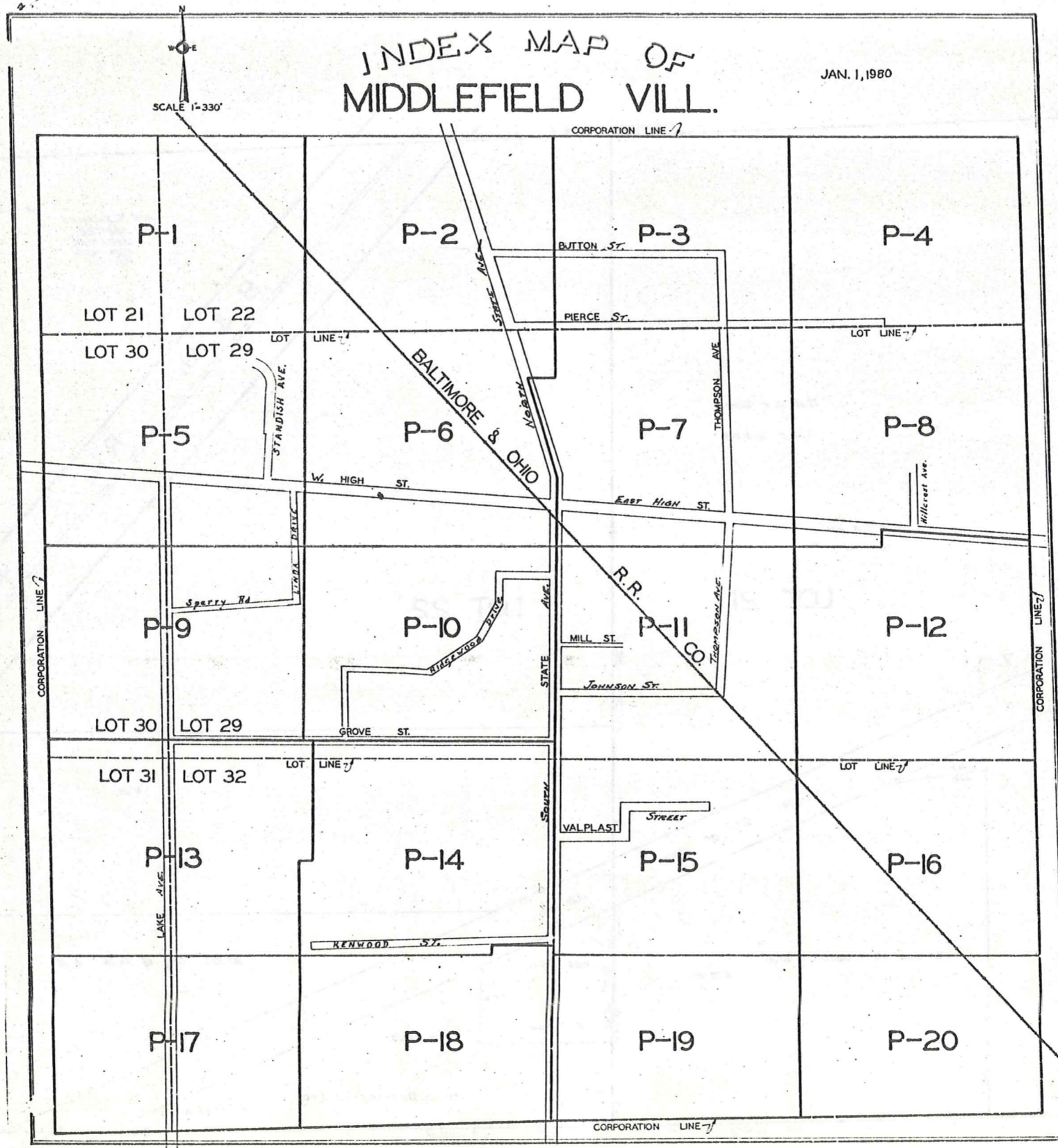


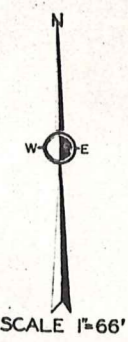
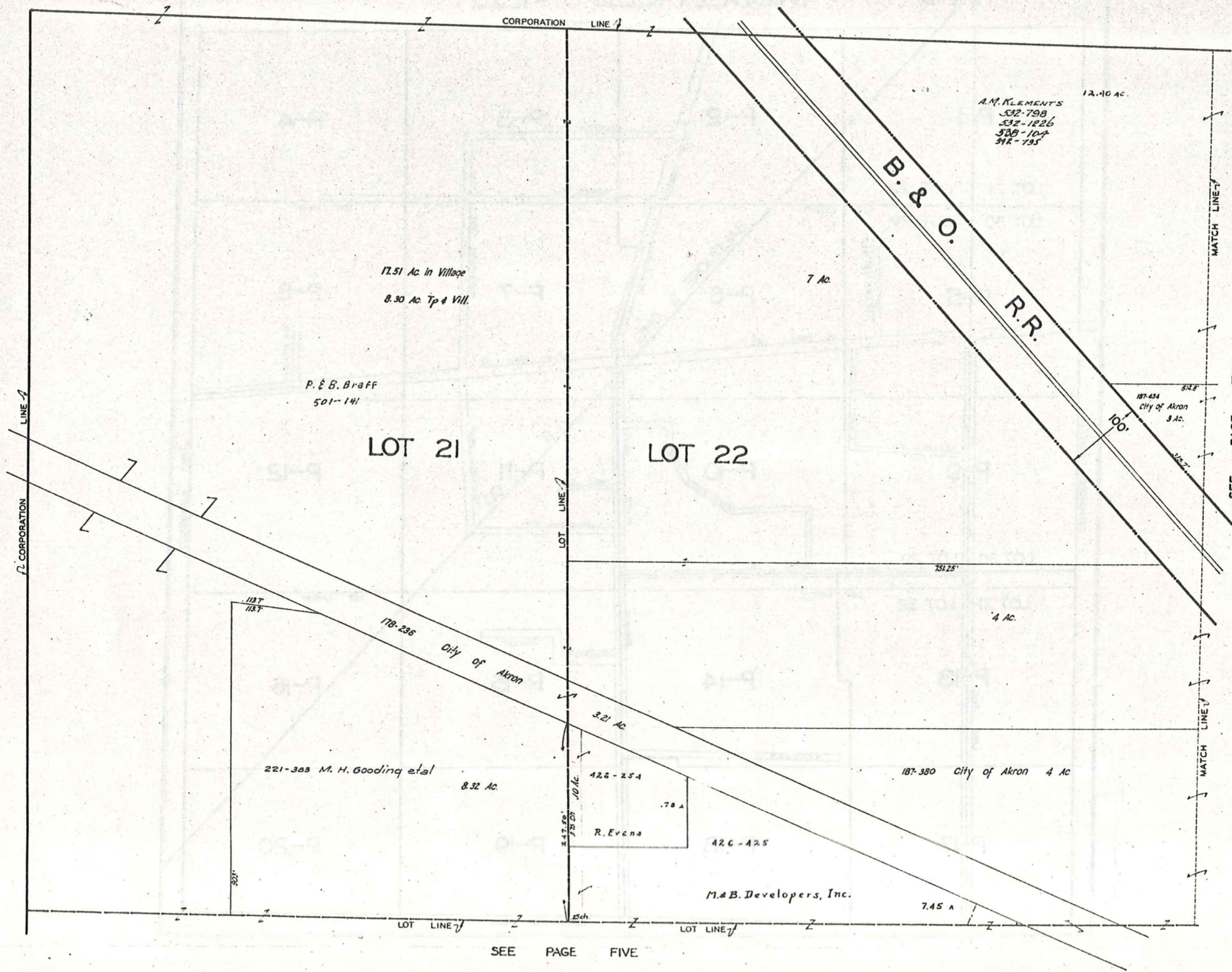
INDEX MAP OF MIDDLEFIELD VILL.

JAN. 1, 1980

SCALE 1"=330'



MIDDLEFIELD VILLAGE



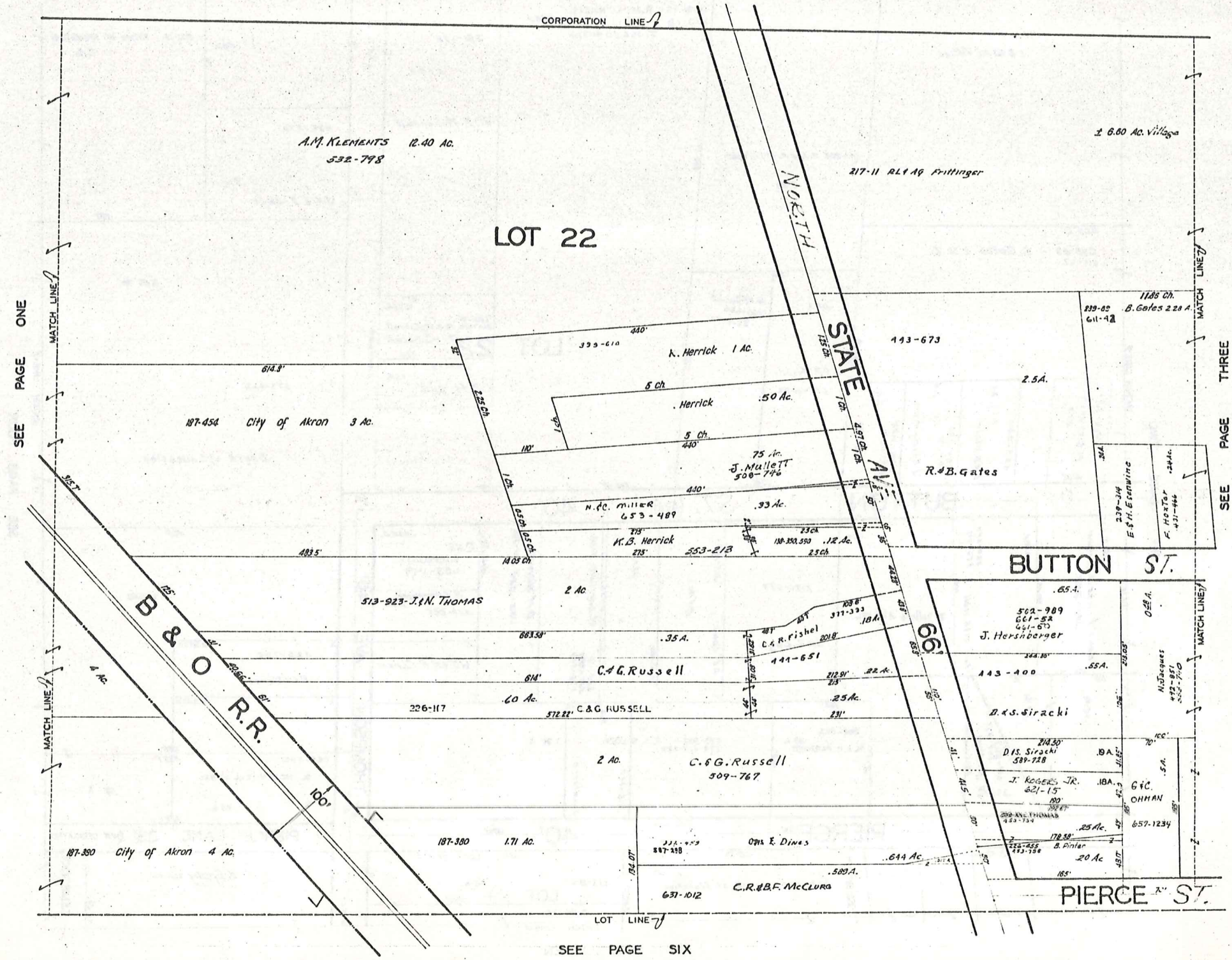
SCALE 1"=66'

JAN. 1, 1984

SEE PAGE TWO

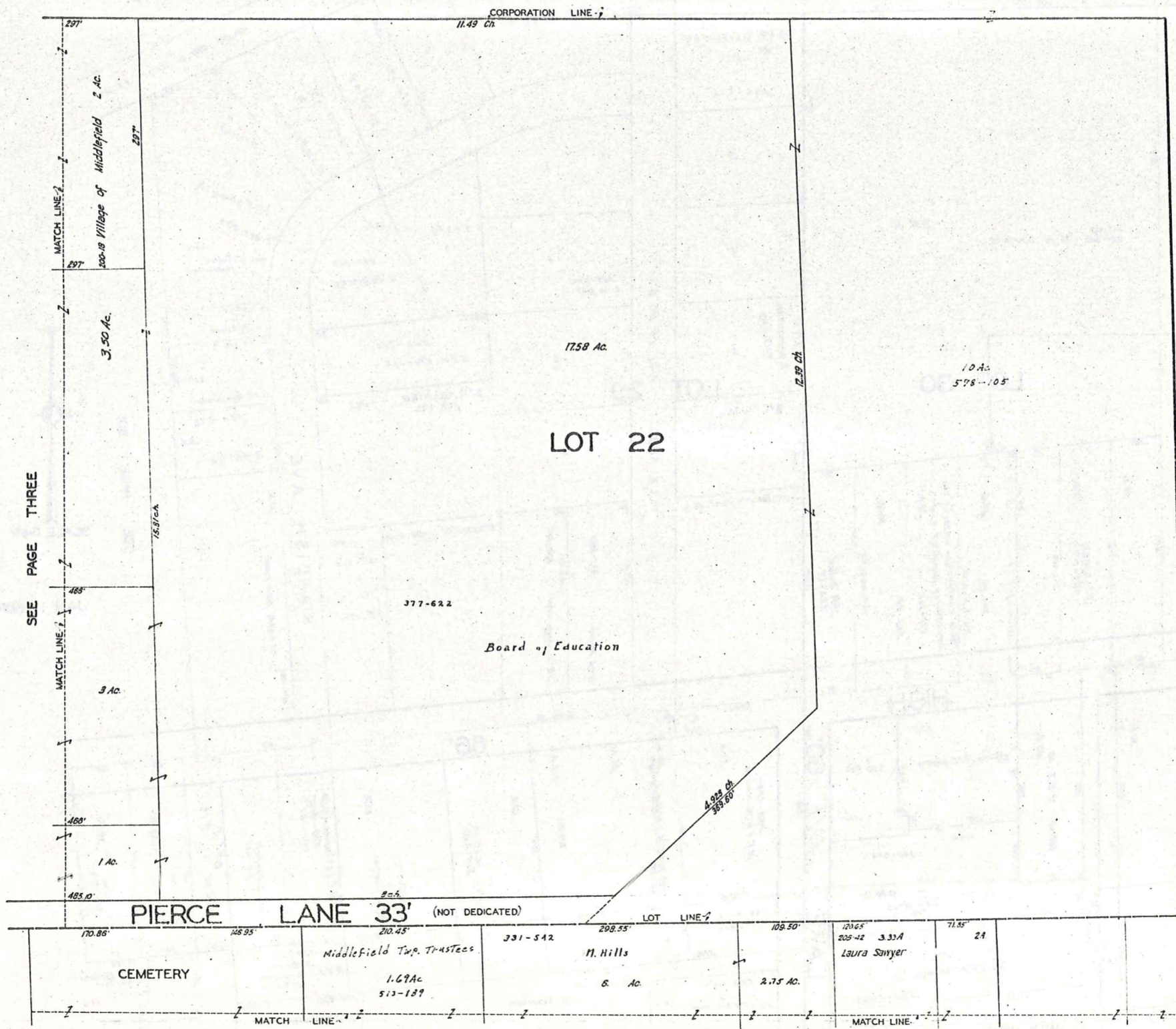
SEE PAGE FIVE

MIDDLEFIELD VILLAGE

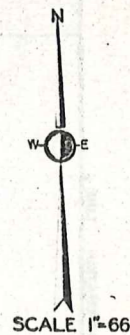


SCALE 1"=66'

JAN 1, 1928



SEE PAGE THREE



JAN 1, 191

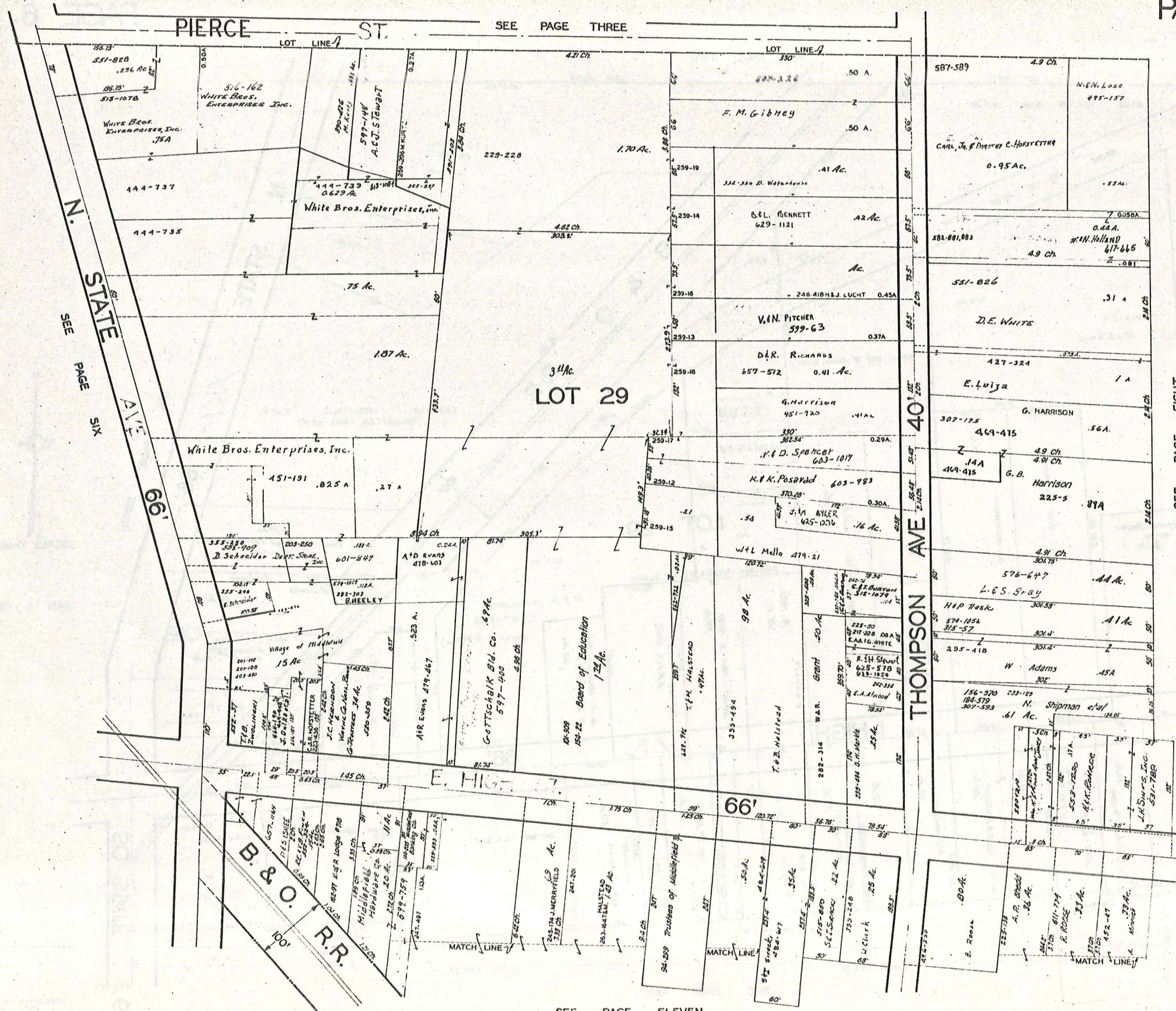
LOT 29

SEE PAGE EIGHT

276

MIDDLEFIELD VILL
PG. 4

MIDDLEFIELD VILLAGE



SEE PAGE THREE

SEE PAGE SIX

SEE PAGE EIGHT

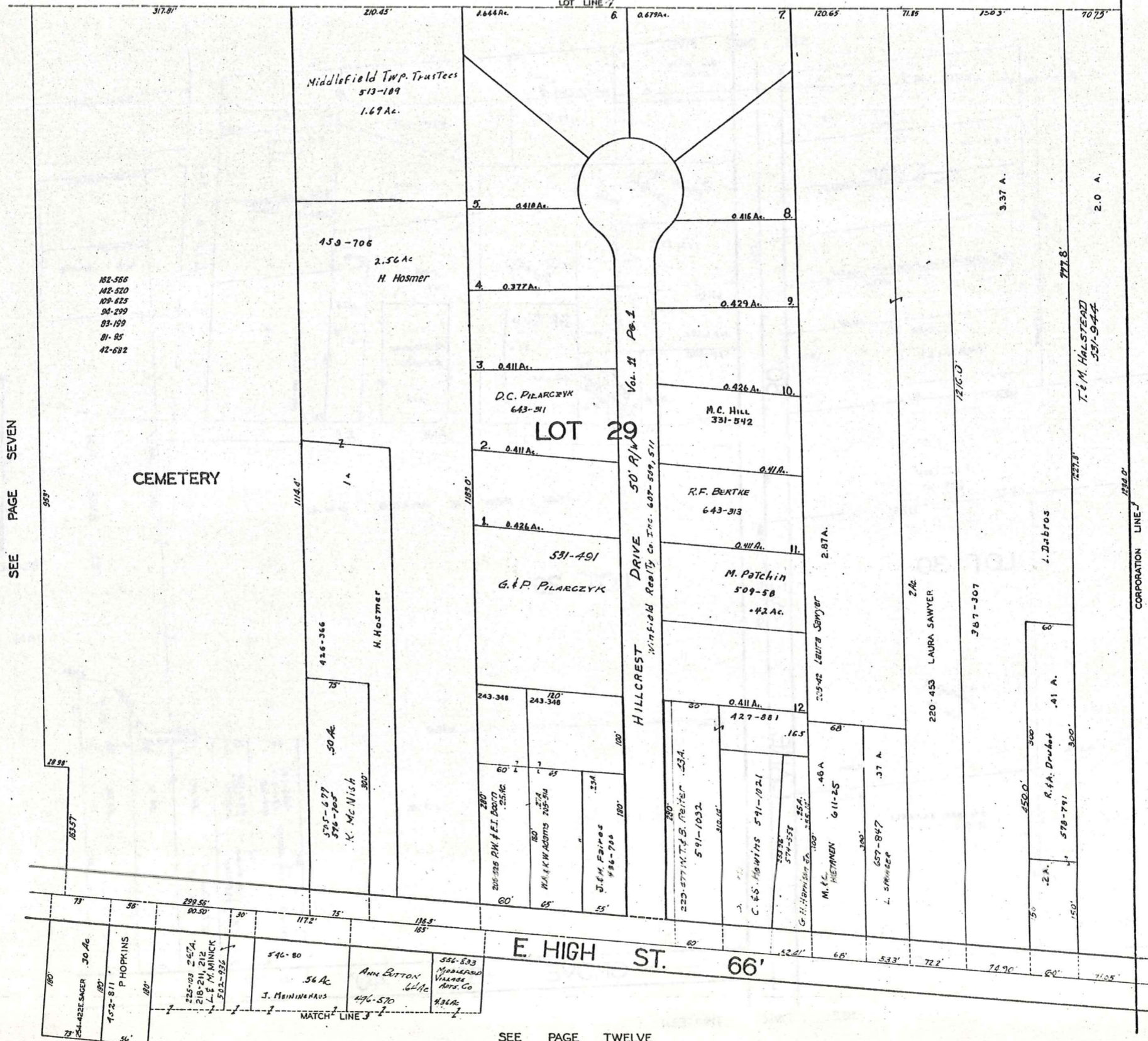


JAN 1, 19

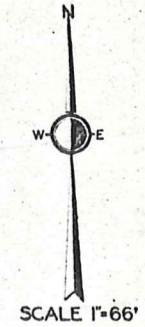
SEE PAGE ELEVEN

MIDDLEFIELD VILLAGE

SEE PAGE FOUR
LOT LINE 7



SEE PAGE SEVEN

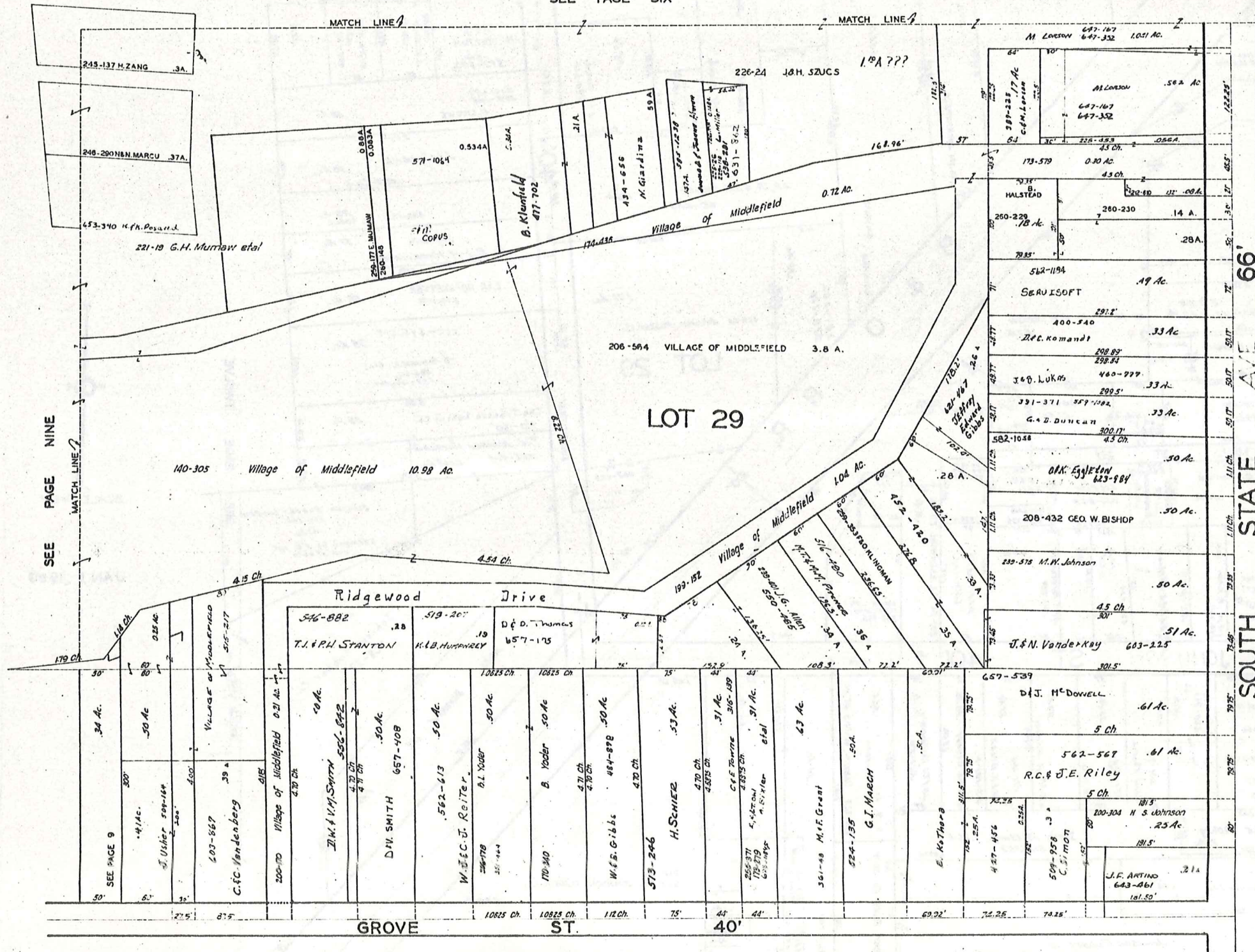


JAN 1, 1960

SEE PAGE TWELVE

MIDDLEFIELD VILLAGE

SEE PAGE SIX



SEE PAGE NINE

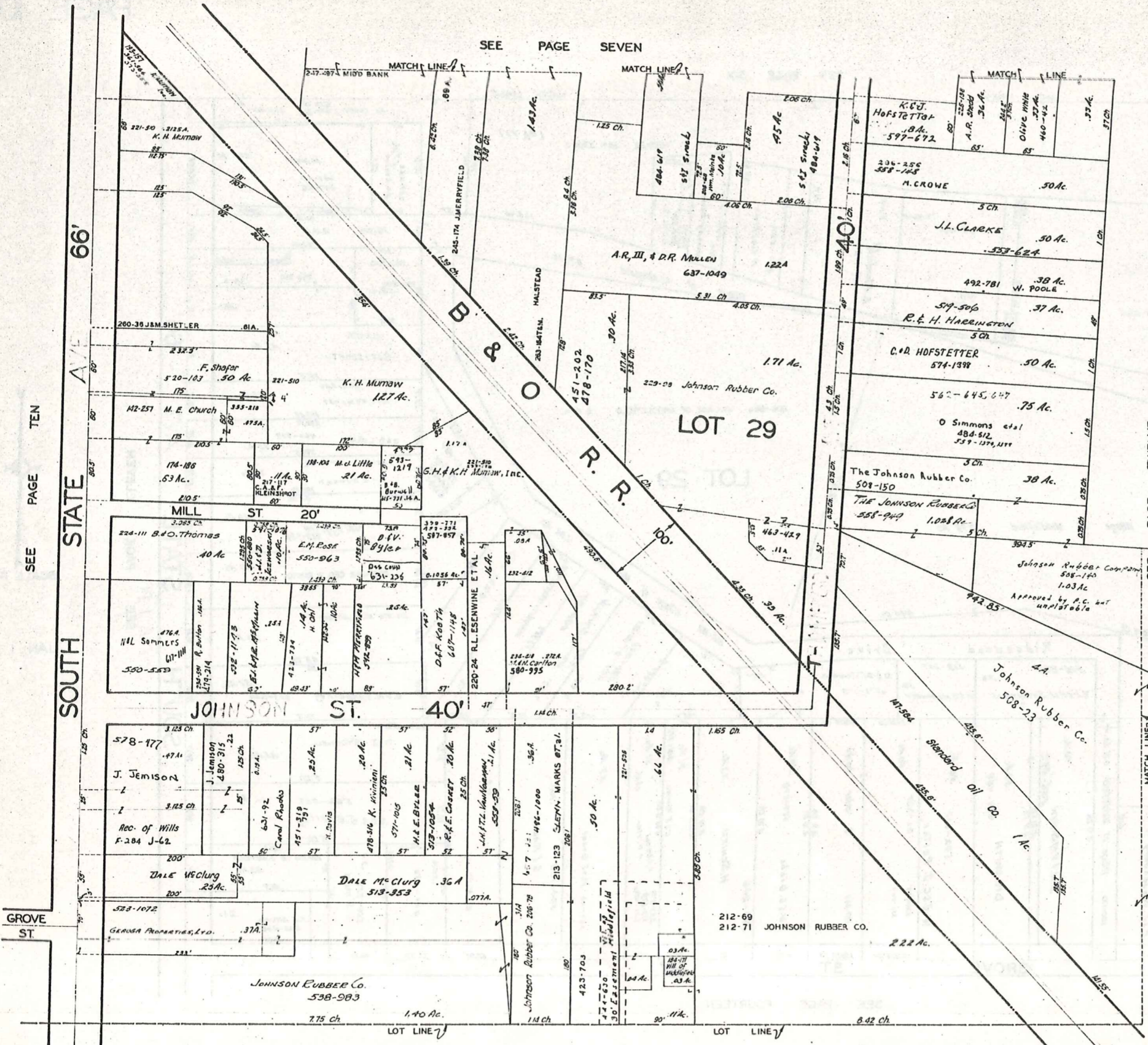
SEE PAGE ELEVEN



SCALE 1"=66'

JAN. 1, 1980

SEE PAGE FOURTEEN

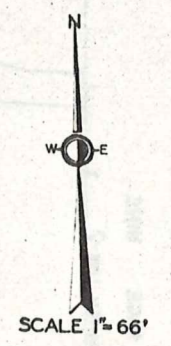


SEE PAGE TEN

SEE PAGE SEVEN

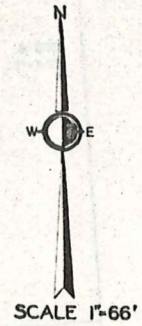
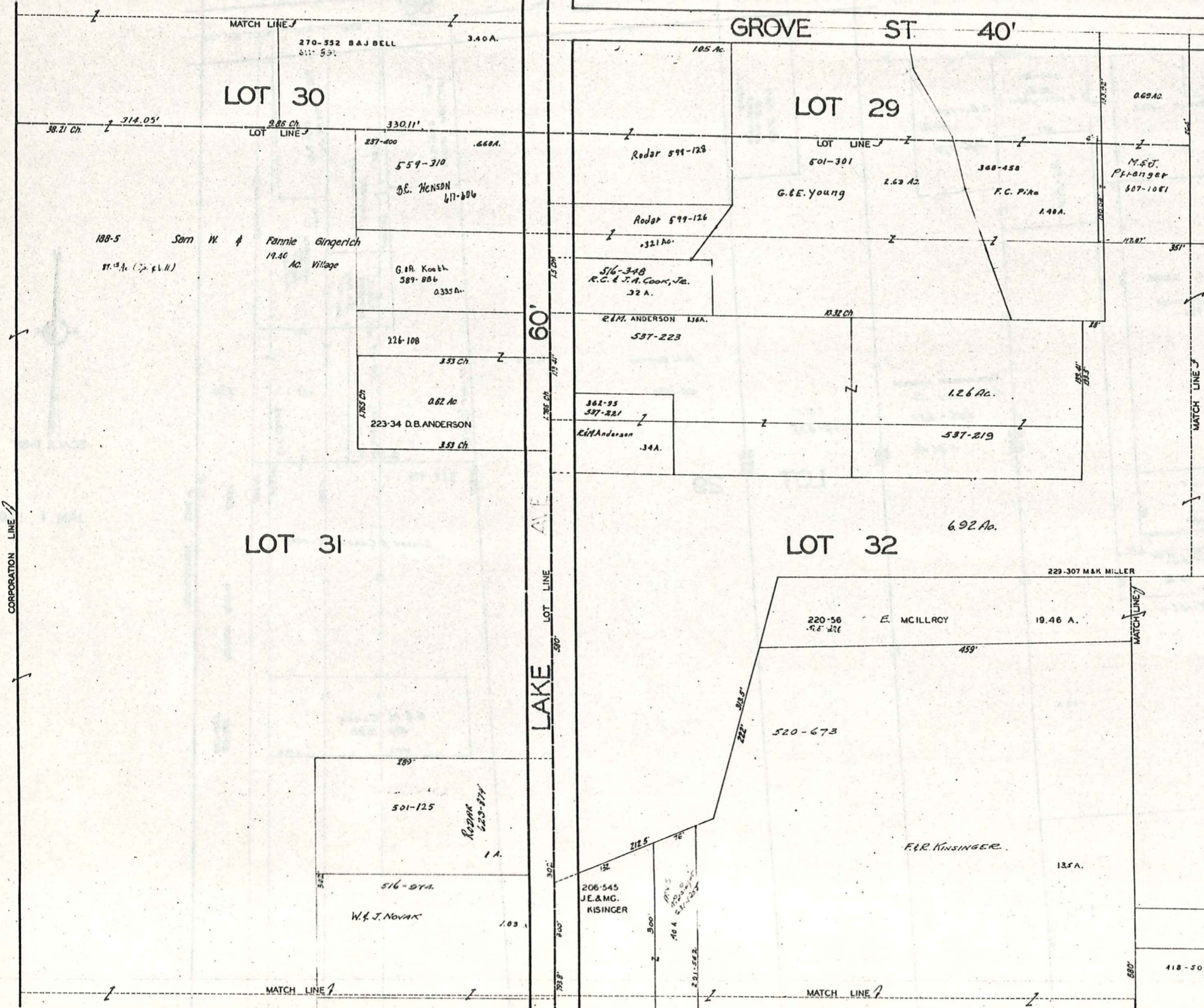
PAGE TWELVE

SEE PAGE FIFTEEN



JAN. 1, 1980

SEE PAGE NINE



JAN 1, 1980

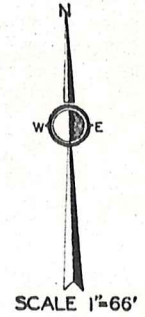
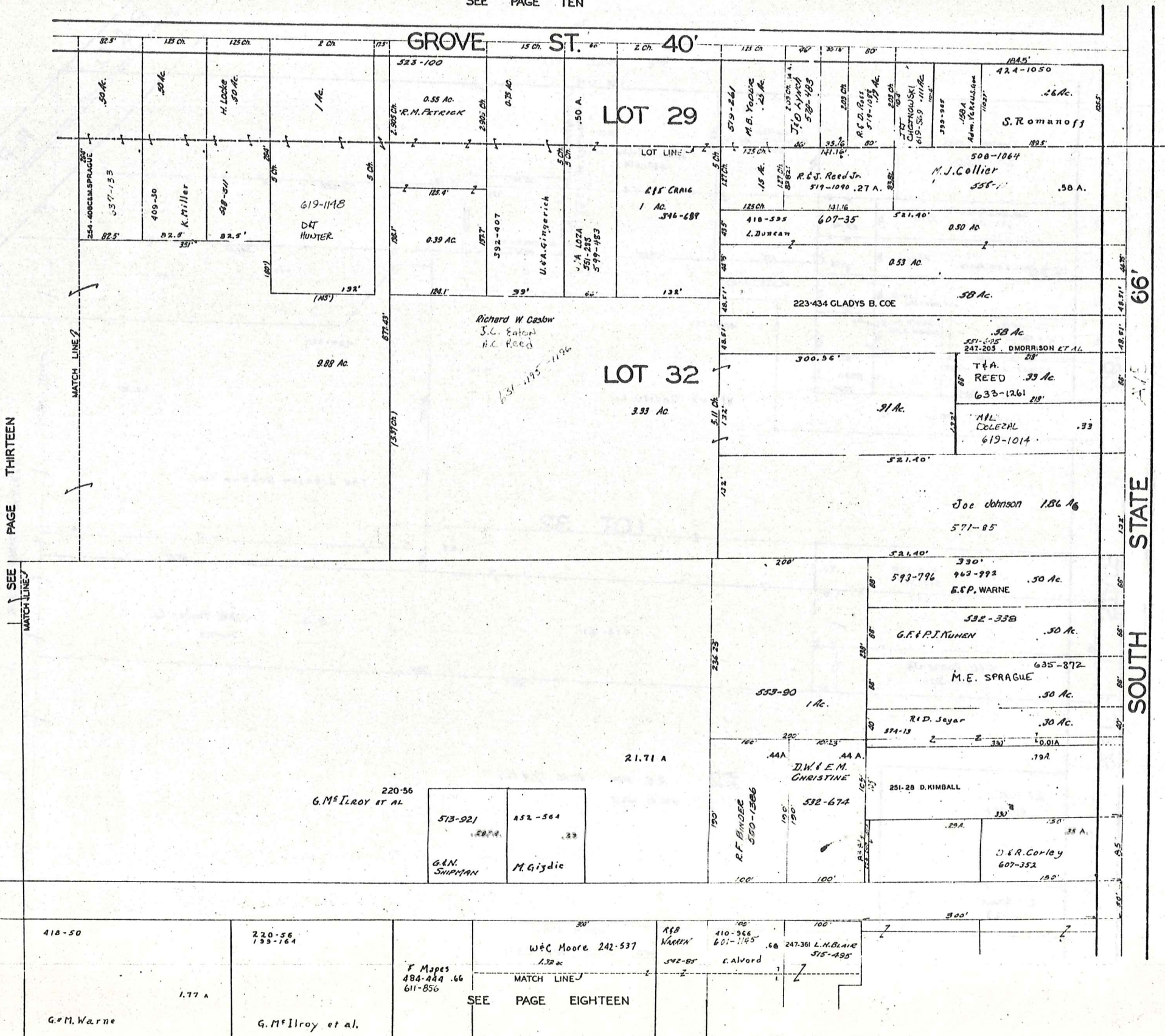
SEE PAGE FOURTEEN

SEE PAGE SEVENTEEN

MIDDLEFIELD VILLAGE
G. & M. Warne
PG. 13
177 A

MIDDLEFIELD VILLAGE

SEE PAGE TEN



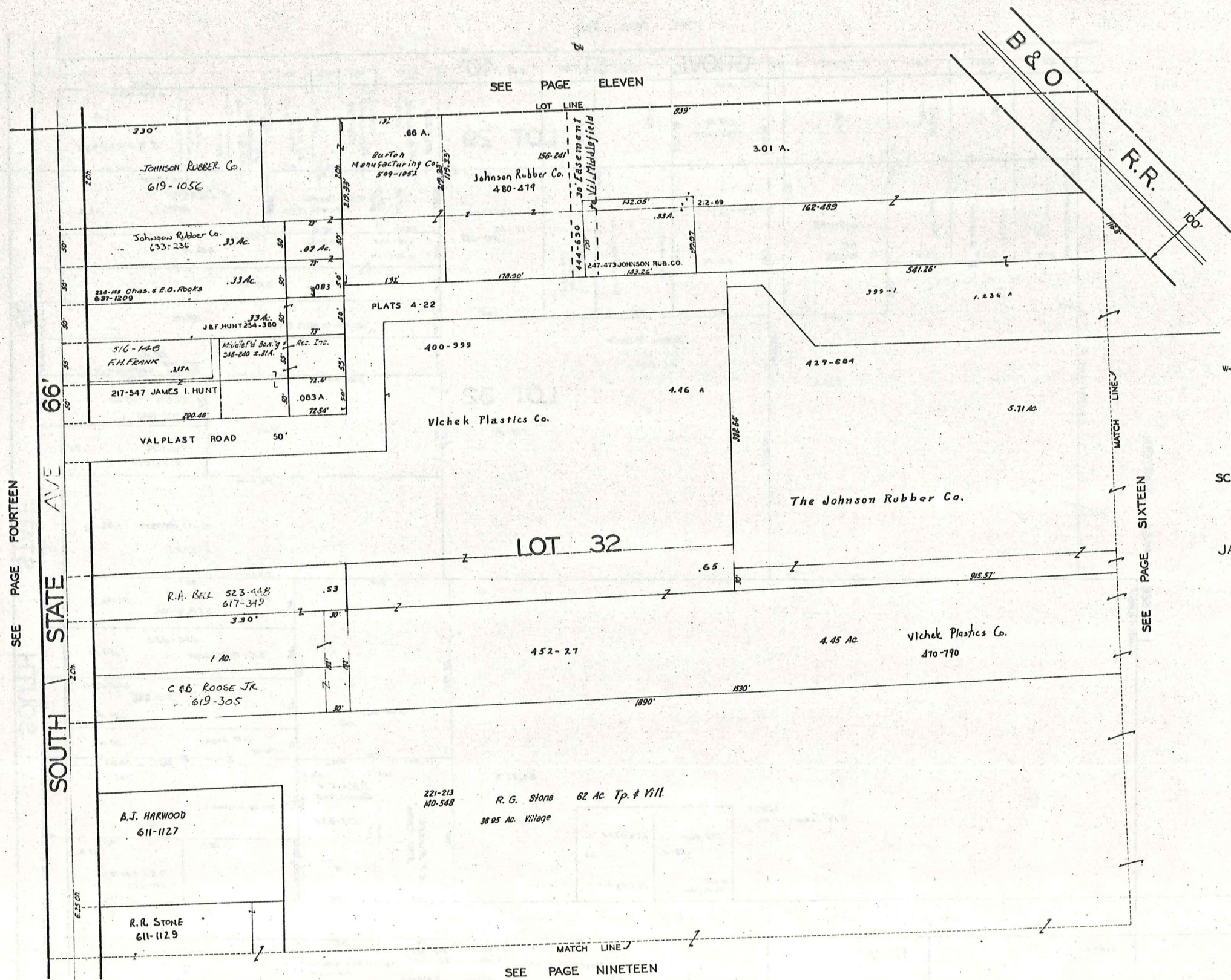
JAN 1, 1980

SEE PAGE FIFTEEN

PAGE THIRTEEN

SEE MATCH LINE

SEE PAGE EIGHTEEN



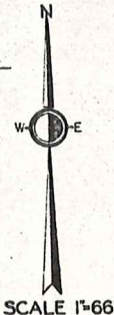
SEE PAGE ELEVEN

SEE PAGE FOURTEEN

SOUTH STATE AVE 66'

SEE PAGE SIXTEEN

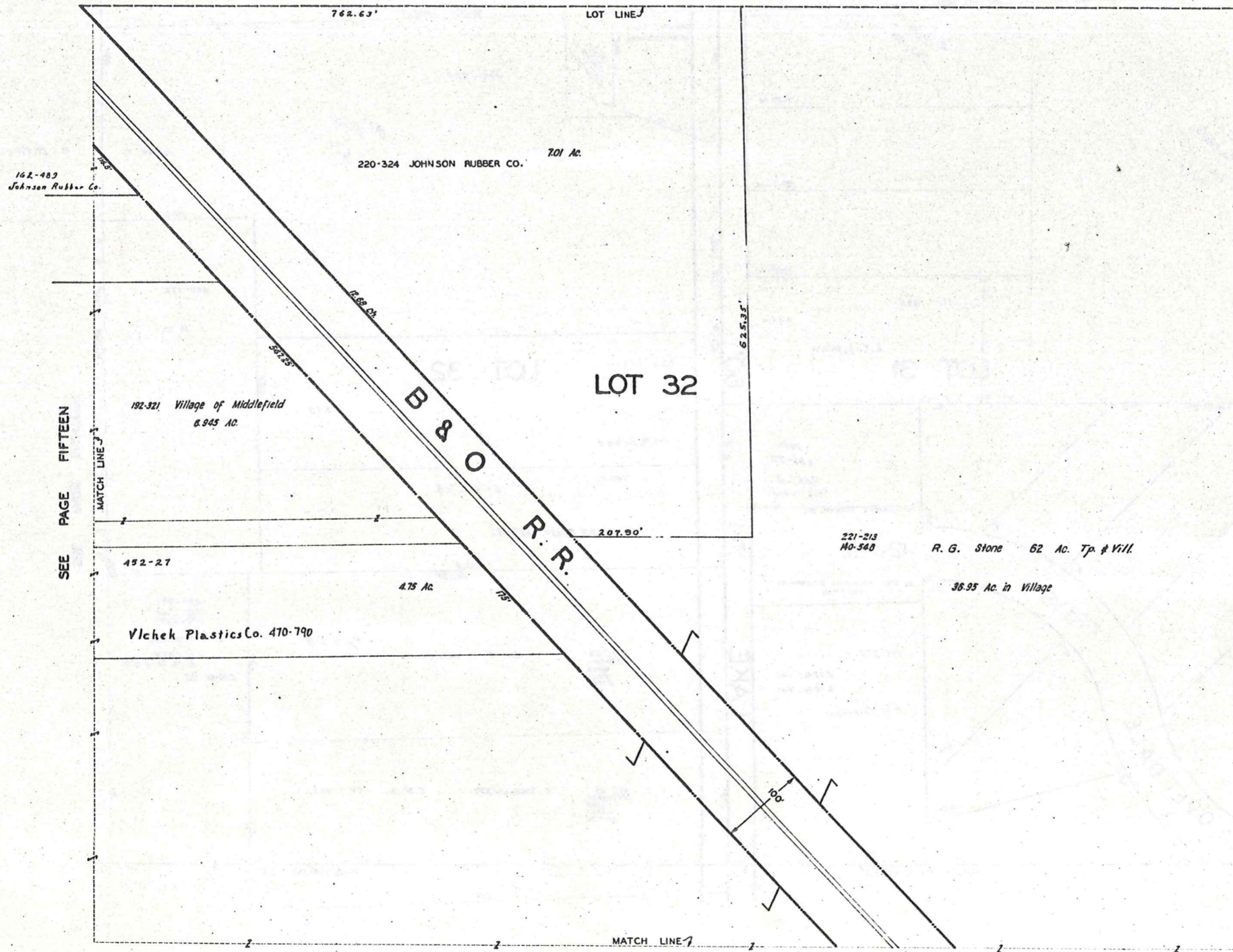
SEE PAGE NINETEEN



SCALE 1"=66'

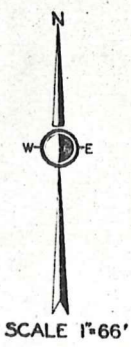
JAN. 1, 1980

SEE PAGE TWELVE



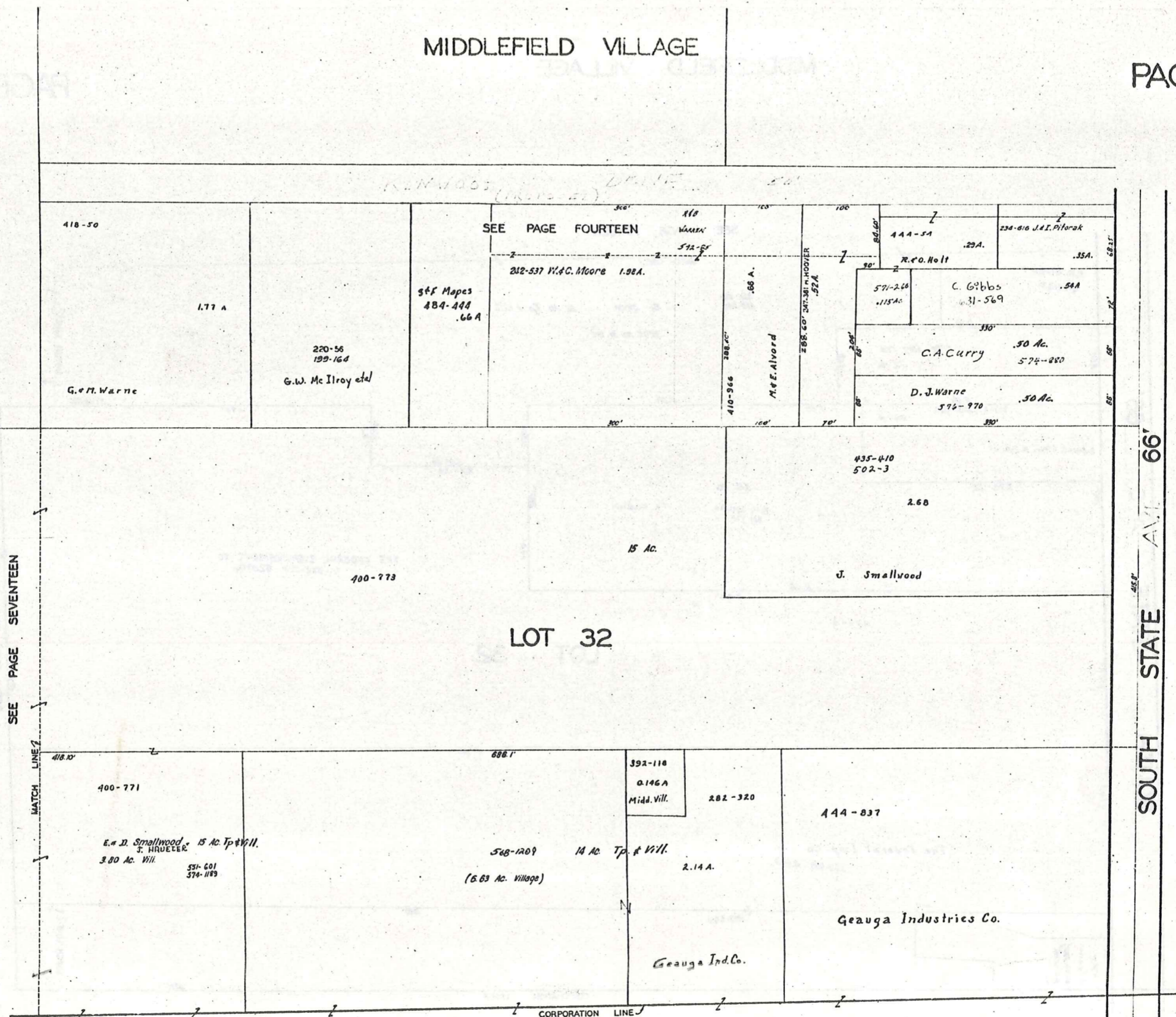
SEE PAGE FIFTEEN

SEE PAGE TWENTY



JAN 1, 1980

MIDDLEFIELD VILLAGE



SCALE 1"=66'

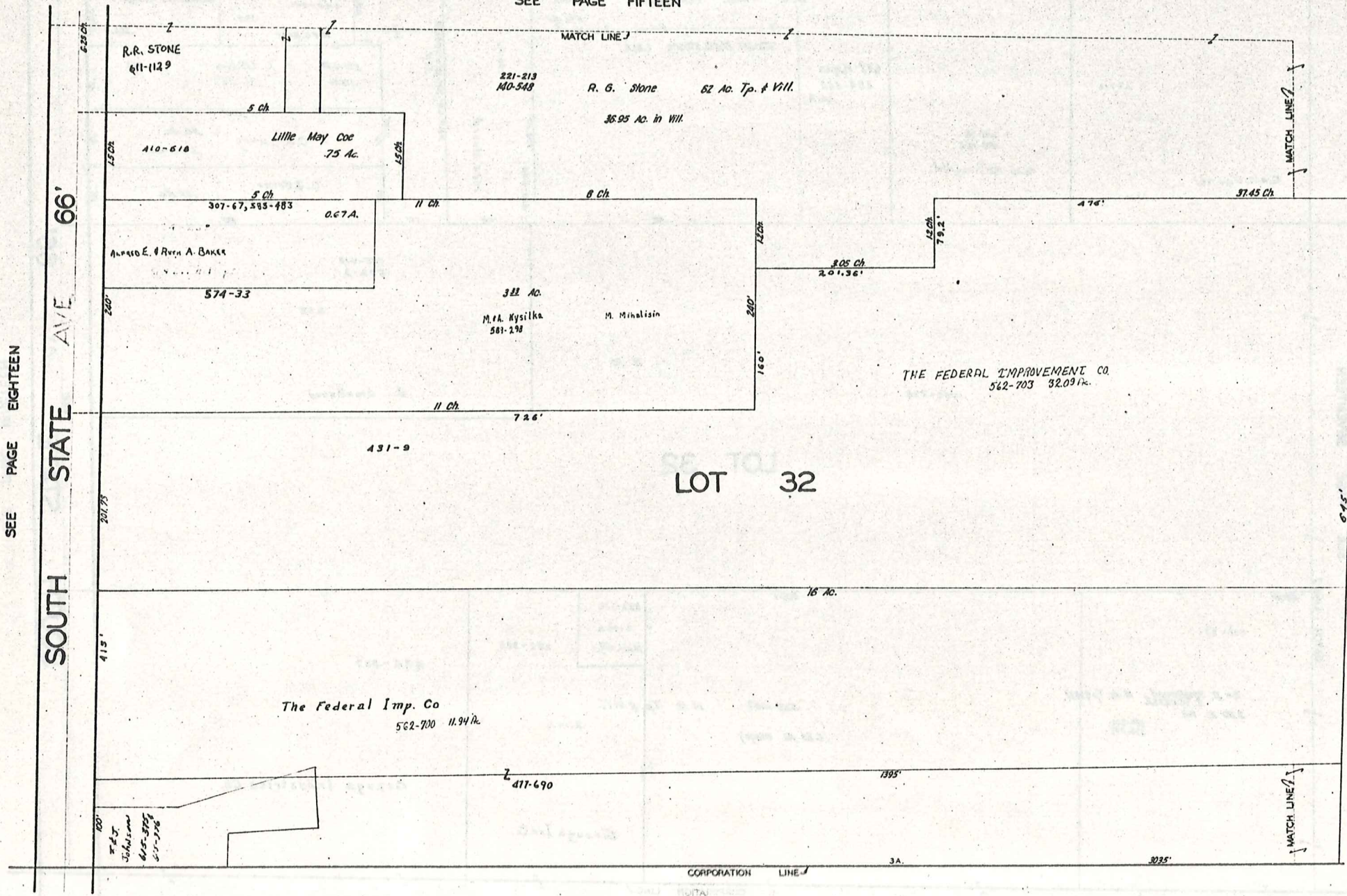
JAN 1, 1980

SEE PAGE SEVENTEEN

SEE PAGE NINETEEN

SOUTH STATE AVE 66'

SEE PAGE FIFTEEN



SCALE 1"=66'

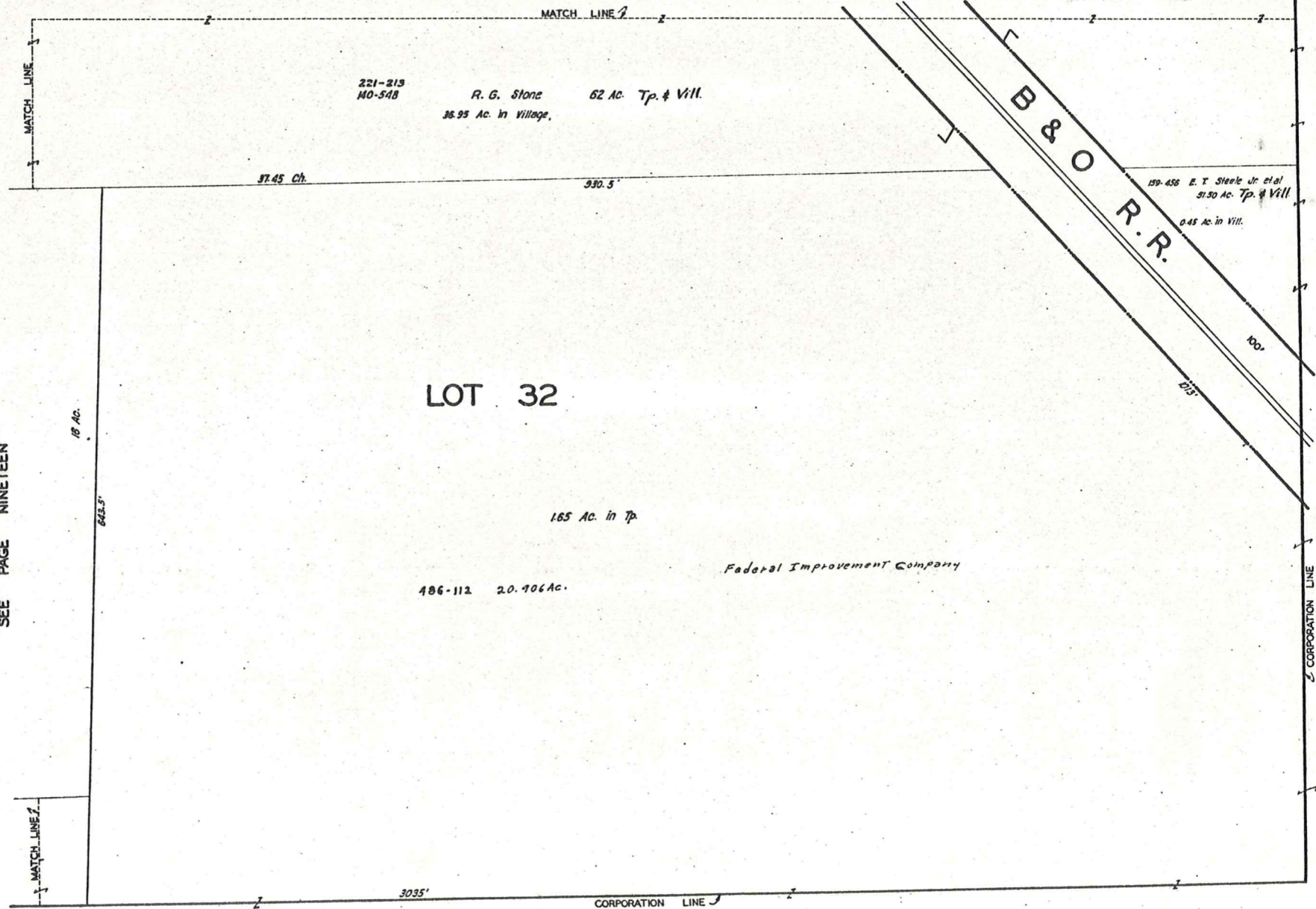
JAN 1, 1980

SEE PAGE EIGHTEEN

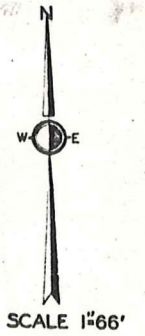
SOUTH STATE AVE 66'

SEE PAGE TWENTY

SEE PAGE SIXTEEN

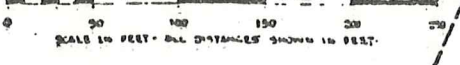


SEE PAGE NINETEEN



JAN .1, 1980

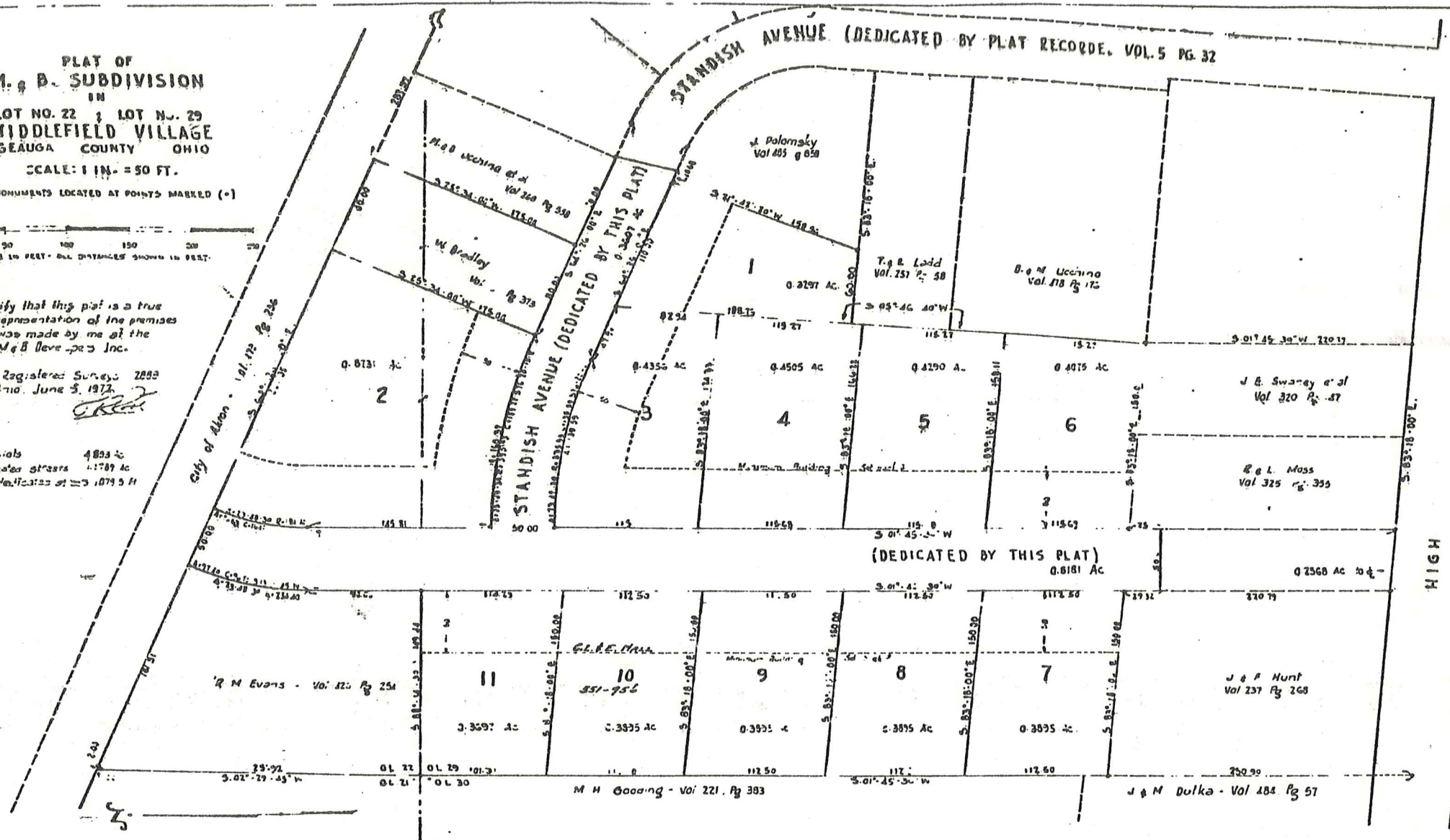
PLAT OF
M. & B. SUBDIVISION
IN
LOT NO. 22 & LOT NO. 29
MIDDLEFIELD VILLAGE
GEAUGA COUNTY OHIO
SCALE: 1 IN. = 50 FT.
IRON MONUMENTS LOCATED AT POINTS MARKED (•)



I hereby certify that this plat is a true and correct representation of the premises shown and was made by me at the instance of M & B Developers, Inc.

T. R. Root Registered Surveyor 2889
Chardon Ohio, June 3, 1973

Total area of sub-plats 4893 ac
Total area of dedicated streets 1.1789 ac
Total length of dedications 10795 ft



M. & B. DEVELOPERS, INC. an Ohio corporation owns the area shown on the map and proposes to subdivide the same as shown hereon, claiming title by or through instrument recorded in volume 115, page 225 of Geauga County records. It hereby accepts and dedicates to public use for highway purposes the area within the boundaries of Standish Avenue. It certifies that said area is free of all encumbrances. Said corporation now requests acceptance of this dedication and subdivision by Middlefield Village and that this Plat be placed upon the records of Geauga County. In witness whereof said Corporation sets its hand and Corporate seal at Ohio this 3rd day of January, 1973.

Witness by _____ its
Witness by _____ its

State of Ohio ss. Before me a Notary Public and for said County and State, persons appeared the above named M & B Developers, Inc. by _____ and _____ who acknowledged that they did sign the foregoing instrument, and that the same is the free act and deed of said Corporation and the free act and deed of each of them personally and on such advice as they testify was of their own free will and accord. My commission expires _____ at _____ Ohio this 3rd day of January, 1973.

Notary Public

FOR MIDDLEFIELD VILLAGE
Acceptance recommended _____
Date _____
Acceptance recommended *James A. Smith, Jr.*
Date Jan 26, 1973 for Village Engineer
Acceptance recommended _____
Date _____

The subdivision of land as shown on this Plat is accepted on behalf of Middlefield Village, and the area dedicated to public use is hereby accepted as shown on said Plat.

Mayor _____
Council President _____
Clerk _____
by Ord. # 481 adopted _____ 1972

FOR GEAUGA COUNTY
Entered for transfer _____ 1973
Transferred _____ 1973
Auditor of Geauga County _____

Filed for Record _____ 1973
Recorded _____ 1973 in _____ Page _____
Gaugua County Plat Records
Recorder of Geauga County _____

